



applicom® Modbus Plus card allows you to connect your computer to industrial networks.

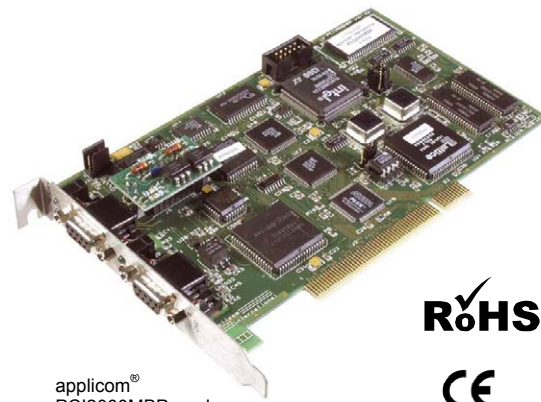
applicom® is the easiest and trouble free solution for data acquisition between PC-Based applications and industrial world.

Modbus Plus Interface Card

Best choice for SCADA/HMI application

Features

- **New!**
 - Support of Windows 32-bit and 64-bit (WoW64)
 - Support of Windows Seven and 2008 Server
- **Combo Offer = Modbus Plus + Modbus on the same card**
- **All protocols included in the package**
- **Free Full technical support during 2 years of hardware warranty**
- **On-board processor eliminates data bottle necks, ensuring delivery of time critical information**
- **Certified with more 50 major SCADA/HMI packages**
- **Modbus Plus Redundancy on the second port**
- **Powerful Modbus plus diagnostic tools**



applicom®
PCI2000MBP card



Overview

applicom® is a range of intelligent communication solutions, complete and ready to use covering more than 40 protocols among a wide choice of industrial networks and fieldbuses: Ethernet TCP/IP, Profibus, Modbus Plus, Data Highway Plus, WorldFIP and Serial Links. These solutions connect your PC-based applications (HMI, SCADA, MES, Custom applications) to industrial equipment (programmable controller, I/O modules, devices...).

Thanks to applicom® smart technology the processing (polling, frame management, etc.) of communications protocols, resulting in extremely fast, efficient application performance.

The applicom® software package includes:

- Graphical configuration software.
- Test and network diagnostic tools.
- Data servers
 - ✓ OPC DA v1.0a, v2.05 and v3.0 (including an OPC client with its source code)
 - ✓ Wonderware I/O Server (DDE, FastDDE, SuiteLink)
- Development libraries
 - ✓ DLL Library
 - ✓ MS Visual Studio (.NET/C#/VB/C++/C), Borland Delphi, Windev
 - ✓ National Instruments (LabWindows CVI, LabVIEW/VI)

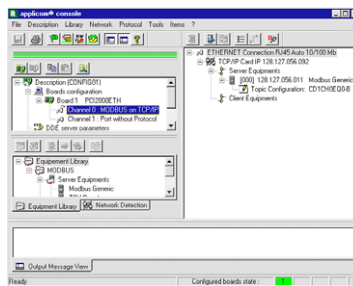
Supported OS

Standard package

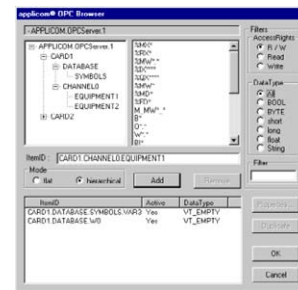
- **Windows 32-bit and 64-bit (WoW64)**
 - Windows XP
 - Windows 2003 Server
 - Windows Vista
 - Windows Seven
 - Windows 2008 Server
 - Windows 2008 Server R2

Free Download

- **Other operating systems**
 - Ardence RTX
 - VxWorks
 - QNX
 - Linux
 - DOS



- Configuration Software -



- OPC Server -

Modbus Plus Interface Card



Communication Ports

1 Modbus Plus port
Port Type: 1 Modbus Plus port
Connector: 9-pin, D-Sub female
LED Indicators: 2 leds - TX / RX
Speed: 1 Mbps (Token Ring)

+

1 Serial port
Port Type: 1 asynchronous Serial port
Connector: D-Sub, 9 pin, female
LED Indicators: 2 leds - TX / RX
Electrical Interface: RS485/RS422 with galvanic insulation (500 V)
Speed: 50 bps to 38.400 Kbps

OR

1 Modbus Plus redundant port
Port Type: 1 Modbus Plus port
Connector: 9-pin, D-Sub female
LED Indicators: 2 leds - TX / RX
Speed: 1 Kbps (Token Ring)



- Network Diagnostic Tools -

Hardware Specifications

Unit: PCI 5V bus
Processor: Intel 80386EX – 32 MHz
Memory: 4 Mbytes SDRAM
Flash Memory: 512 Kbytes
Interruption: Hardware Plug&Play
DPRAM Address: Hardware Plug&Play (8 Kbytes used per board)
 Opto-coupled discrete input
Digital I/O: Voltage -> DC +10 to +30 or AC 24 V (50 to 60 Hz)
 "Watchdog" output contact free from potential (floating) (24V DC, 0.25 A)
Dimensions (L x W): 175mm x 107mm (6.89" x 4.17")
Consumption: 4W (max. 0.8A)
Temperature: Operating: 0° C (32° F) up to +65° C (149° F)
 Storage: -40° C (-92° F) up to +80° C (176° F)
EMC Compliance: EN55022 Class B, EN55024, EN61000-3-2, EN61000-3-3
RoHS Yes

Protocols (all included in the package)

Modbus Plus	Serial	
		• Modbus Plus - all Modbus Plus Client/Server devices
		• Allen-Bradley - DF1 (PLC-5 and SLC Series) M, C / S
		• GE Fanuc / Alstom - SNPX (90-XX and 80-XX Series) M
		• Elsag Bailey - Data Link (5000 & 2000 Series) M
		• Modbus RTU / ASCII M / S
		• Moeller Group - Sucoma (PS32, PS316 Series) M
		• Omron - Sysmac Way M
		• Saia Burgess - S-Bus (PCD Series) M
		• Siemens - 3964/3964R Free or RK512 M, C / S
		• Siemens - AS511 (S5 Series) M
		• Siemens - PPI / PPI+ (S7-200 Series) M
		• Siemens - TI-Dir (TI-505 Series) M
		• Schneider Electric - Uni-Telway (TSX 17, 37, 57) M / S, C / S
		• Development toolkit for Serial protocols M / S

M: Master, S: Slave, C: Client, S: Server

Ordering Information

Part Number	SAP	Product description
APP-MBP-PCI-C	1120210027	applicom® PCI2000MBP Modbus Plus Network Interface card

Network Interface

Brad[®]
 from **molex**

To contact us: www.woodhead.com

North America: US: +1 (630) 969-4550 – Canada: +1 519 725 5136
 Europe: France: +33 2 32 96 04 20 – Germany: +49 7252 94 96 0 – Italy: +39 (02) 950551 – UK: +44 (1252) 720720
 Asia: China: +86 21 5048 0889 – Singapore: +65 6 268 6868 – Japan: +81 46 265 2325 – Korea: +82 31 492 9000

Brad is a registered trademark and BradControl, BradCommunications, applicom, Direct-Link and SST are trademarks of Molex Incorporated. © 2010 Molex